

# Regional And Village Corporation Employment Profile

Social and Economic Studies



Special Report No. 7

Contract No. 14-32-0001-30385

**SPECIAL REPORT**

**REGIONAL AND VILLAGE CORPORATION  
EMPLOYMENT PROFILES**

Submitted to  
Minerals Management Service  
U.S. Department of the Interior

by

Kevin Waring Associates

In association with

Gillian Smythe & Associates

This report has been reviewed by the Minerals Management Service and approved for publication. Approval does not signify that the contents necessarily reflect the views and policies of the Service, nor does mention of trade names or commercial products constitute endorsement or recommendation for use.

This study was funded by the Minerals Management Service, U.S. Department of the Interior, Washington, D. D. under contract number 14-12-0001-30385.

September 1988

TABLE OF CONTENTS

|      |   | Page |
|------|---|------|
| I.   | INTRODUCTION .....  | 1    |
| II.  | NORTH SLOPE REGION .....*                                       | 4    |
|      | A. Arctic Slope Regional Corporation .....                      | 4    |
|      | B. <b>Ukpeagvik Inupiat</b> Corporation .....                   | 11   |
|      | C. <b>Olgoonik</b> Corporation .....                            | 13   |
| III. | NANA REGION * .....   | 15   |
|      | A. NANA Regional Corporation .....                              | 16   |
|      | B. <b>Maniilaq</b> Association .....                            | 19   |
|      | C. <b>Kikiktagrak Inupiat</b> Corporation .....                 | 21   |
| IV.  | BERING STRAITS REGION .....                                     | 23   |
|      | A. Bering Straits Native Corporation .....                      | 24   |
|      | B. <b>Kawerak, Inc.</b> .....                                   | 25   |
|      | C. <b>Sitnasuak</b> Native Corporation .....                    | 28   |
| V.   | BETHEL REGION .....   | 30   |
|      | A. <b>Calista</b> Corporation .....                             | 30   |
|      | B. Association of Village Council Presidents, <b>Inc.</b> ..... | 33   |
|      | C. <b>Alakanuk</b> Native Corporation .....                     | 35   |
| VI.  | BRISTOL BAY REGION .....  | 36   |
|      | A. Bristol Bay Native Corporation .....                         | 37   |
|      | B. Bristol Bay Native Association .....                         | 38   |
|      | C. <b>Choggiung</b> Ltd. ....                                   | 40   |
|      | D. <b>Togiak</b> Natives, Ltd. ....                             | 42   |
| VII. | ALEUTIANS REGION .....  | 44   |
|      | A. <b>Aleut</b> Corporation .....                               | 45   |
|      | B. <b>Aleutian-Pribilof</b> Island Association, Inc. ....       | 47   |
|      | C. <b>Chaluka</b> Corporation .....                             | 48   |
|      | D. <b>Ounalashka</b> Corporation .....                          | 49   |
|      | E. <b>Tanadgusi x</b> Corporation .....                         | 50   |

## I. INTRODUCTION

As part of this project, six regional ANCSA corporations, five regional non-profit Native corporations and ten village **ANCSA** corporations were contacted by mail and telephone in order to obtain information relating to the people which they employed. Each corporation was asked to list the number of employees by race and sex for the parent company and any subsidiaries. They were also asked to provide information on the number of shareholders and the approximate proportion of shareholders who now lived either in the region or community in question. Where possible, the same corporations were asked to provide copies of their most recent annual reports.

The responses to this information request were mixed. Although individual corporations were generally responsive, the **level** of information which they provided was uneven.

The **activities** of some of the regional **ANCSA** corporations are highly diversified, involving a number of **wholly** or partially owned subsidiaries, plus joint venture arrangements. Often, the parent company either does not possess the type of information requested for its subsidiaries or is unable to retrieve it easily. This is particularly true for joint venture agreements or companies over which the parent company has **little** direct control.

Except for Calista, general information on the activities of the regional ANCSA corporations is available from annual reports. (Calista also issues annual reports but recently decided to make them available only to shareholders). In addition, all six regional ANCSA corporations covered by this report maintain offices in Anchorage. When possible, personal meetings with corporation and subsidiary company personnel proved to be the most productive means of obtaining the desired information.

In general, the regional non-profit corporations were able to provide the information requested in a consistent format, i.e. employment by race and sex. These corporations function as quasi-government agencies and their head offices are normally staffed by full-time employees. (This is less true of field personnel). Information on the activities in which the regional non-profits are involved is usually, although not always, available in annual reports. However, while information on the regional non-profits is fairly generally available, the comparability of the data, especially when disaggregate by race and sex, can be misleading because of differences in the scale of the various corporations and the programs for which they have assumed responsibility. For example, in the NANA region, Maniilaq is responsible for the delivery of a wide range of hospital, community health, social and regional services programs. However, the Village Public Safety Officer program in this region is contracted to Maniilaq Manpower, Inc. A breakdown of Maniilaq's employment by race and sex indicates that this organization is a major employer of Native females. By contrast, another regional non-profit, AVCP, employs a high proportion of Native males, primarily because it runs the Village Public Safety

Officer program and **is** not responsible for hospital **or** health care programs. Thus, any conclusions about the types of people which the **non-profit** employ need to be drawn with care.

The village ANCSA corporations usually have a simpler corporate structure than do the regional ANCSA corporations. However, because these corporations are village-based and because this project included no fieldwork, it was often difficult to elicit meaningful data. **In** particular, it proved to be extremely difficult to obtain accurate information on average or year-round employment and details as to corporate structure. Complicating this task is the fact that, except for Sitnasuak (Nome), none of the village corporations covered by this study issue **annual** reports for general release.

## II. NORTH SLOPE REGION

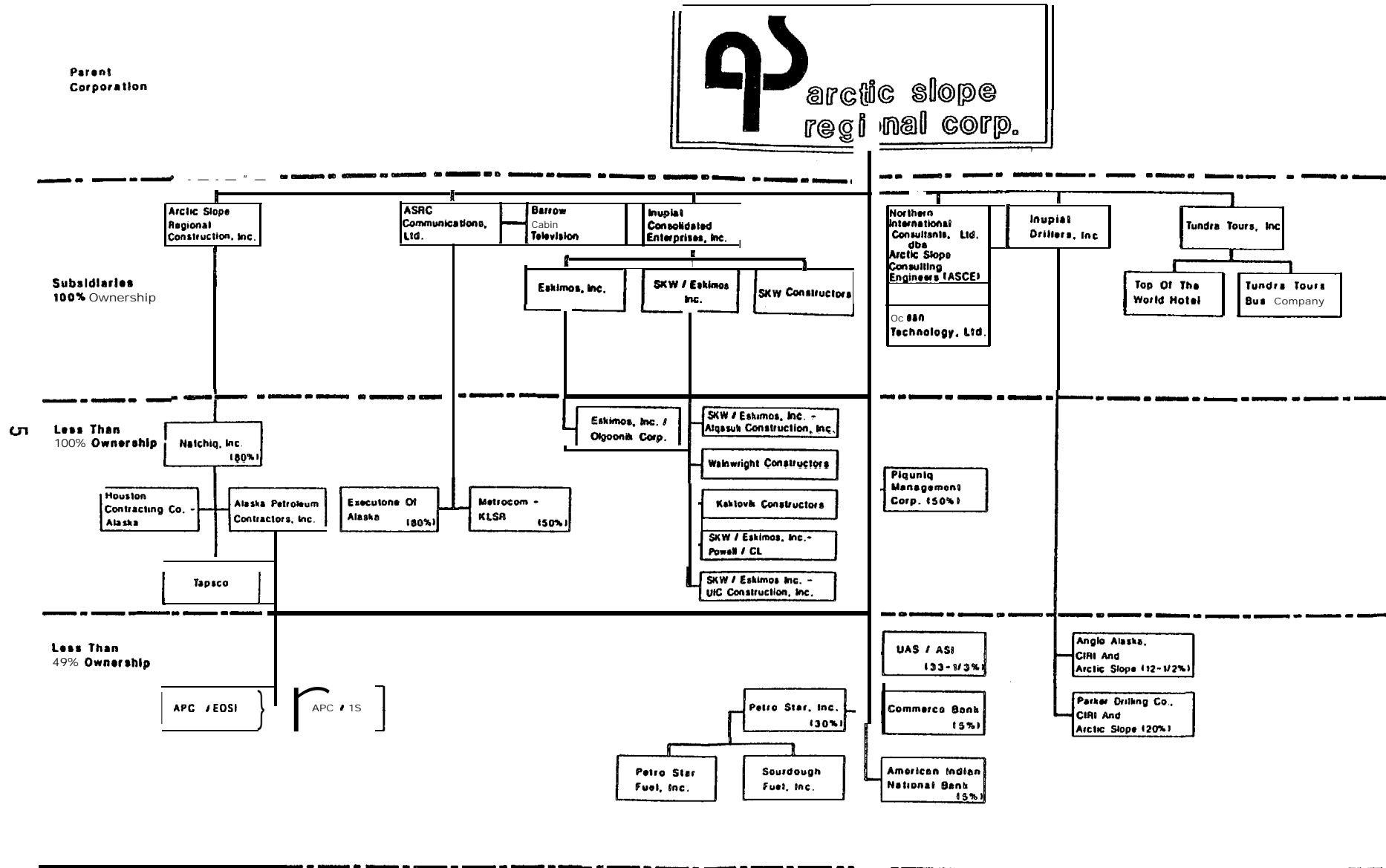
In the North Slope region, the activities of the Arctic Slope Regional Corporation and two village corporations, Ukpeagvik Inupiat Corporation (UIC) and the Olgoonik Corporation, were examined. No examination of regional social services organizations was undertaken as most functions provided by regional non-profit corporations in the other regions have been assumed by the North Slope Borough.

### A. ARCTIC SLOPE REGIONAL CORPORATION

The Arctic Slope Regional Corporation is headquartered in Barrow but also maintains a small office in Anchorage. The Corporation currently has approximately 3,700 shareholders. There are eight Native village corporations located within the Arctic Slope Regional Corporation region.

The Arctic Slope Regional Corporation is a highly diversified company with a large number of wholly owned and partially owned corporate subsidiaries, plus joint venture arrangements (see Figure 1). It has six major subsidiaries which oversee the operations of its wholly and partially owned companies and joint ventures. In addition, the parent company is directly involved, with other North Slope corporations in the Piquiniq Management Corporation and, to a lesser extent, in a number of other banking and petroleum-related enterprises.

FIGURE 1: CORPORATE STRUCTURE, ARCTIC SLOPE REGIONAL CORPORATION





For this project, employment figures for the Arctic Slope Regional Corporation's Anchorage office, for Arctic Slope Consulting Engineers, SKW/Eskimos Inc. and for Natchiq Inc. and its subsidiaries were obtained as a result of personal interviews with representatives of each company. Employment information for other ASRC subsidiaries was solicited by mail and by telephone. Nevertheless, gaps in the data exist, including information on the parent corporation in Barrow and on Eskimos, Inc.'s operations. Both of these companies are important employers of Inupiat within the North Slope region. No attempt was made to obtain employment information for companies in which the Arctic Slope Regional Corporation holds a less than 50 percent interest. In addition, employment data was not sought from communications companies based outside the North Slope region which are partially owned by the regional corporation.

The six primary subsidiary companies which oversee the diverse operations of the Arctic Slope Regional Corporation are as follows:

Inupiat Consolidated Enterprises. This is a holding company subsidiary which holds all of the stock in Eskimos, Inc., SKW/Eskimos, Inc., and SKW/Constructors, Inc. Eskimos, Inc. is based in Barrow and is chiefly involved in bulk and retail fuel sales; automotive and truck parts, hardware and welding gases and supplies; operation of the Barrow gravel pit; and the design and construction of modular homes. SKW Constructors, Inc. works primarily on heavy industrial projects in the Anchorage area but is currently inactive. SKW/Eskimos, Inc. provides construction services, within the North Slope region, often in partnership with North Slope village corporations.

Arctic Slope Regional Construction, Inc. This company oversees the activities of **Natchiq, Inc.** in which the Arctic Slope Regional Corporation has an 80 percent share. **Natchiq, Inc.** is a holding company which holds all of the stock in Houston Contracting Company-Alaska, Ltd., Alaska Petroleum Contractors, **Inc.** and Tapsco. Houston Contracting Company-Alaska, Ltd. is a union contractor involved in **oilfield** construction and servicing activities in the Prudhoe Bay area, while **Alaska Petroleum Contractors, Inc.** is a non-union contractor which is also involved in **oilfield** construction services (primarily maintenance-related) in the Prudhoe Bay area. Both of these companies are headquartered in Anchorage. Tapsco is a small **oilfield** service company which operates a machine shop in **Nikiski**. Two companies in which the Arctic **Slope** Regional Corporation has a **less than 50** percent share but which **are** under the umbrella of **Alaska Petroleum Contractors** are **APC/EOSI** (Eskimos **Oilfield** Services, Inc.), which **is** involved in the **Endicott oilfield** project, and **APC/TS** which is a small modular prefabricated building company with plants in **Wasilla** and the State of Washington.

Arctic Slope Consulting Engineers is a company providing professional engineering and project/construction management services, both within the North **Slope** region and elsewhere in the State. The company has offices in Barrow, Fairbanks and **Soldotna** as well as its main office in Anchorage.

ASRC Communications, Ltd. operates the Barrow cable TV system and has also expanded its activities into other areas. These include Executone of Alaska, a long distance telephone company which also

**sells and leases** telephone, intercom, paging and sound systems, and **Metrocom - KLSR.**

**Tundra Tours. Inc.** operates the **Top of the World** Hotel in **Barrow** and is involved **in the** promotion **of local** tourist attractions. In addition, the Tundra Tours Bus Company provides **school bus** services **under** contract to **the** Matanuska-Susitna Borough **School** District.

**Inupiat Drillers. Inc.** oversees the joint **venture** petroleum **drilling** activities **in** which the Arctic **Slope Regional** Corporation is involved. These **include** agreements with established drilling companies such as Parker **Drilling** and **Anglo** America and which **also include** Cook Inlet Region, **Inc. (C IRI).**

The figures contained in **Tables 1** and **2** convey some idea of the race and gender of employment of the **Arctic Slope Regional** Corporation and its subsidiaries. Aside from noteworthy gaps in the data, there are difficulties in allocating employment by race and sex for companies involved in construction and **oilfield** services which do not maintain a consistent year-round **workforce.** Thus, data for subsidiaries of **Arctic Slope** Regional Construction represent **total** employment for **1988** through **August 1** of that year. Similarly, data for **SKW/Eskimos Inc.** contained in **Table 2** refers to total employment for that company and its partnership operations for **1987.** **SKW/Eskimos** Inc. indicated that approximately **70** percent of its employees were males, although this proportion can change depending on the particular projects **in** which **it** is involved.

TABLE 1

1988 EMPLOYMENT  
ARCTIC SLOPE REGIONAL CORPORATION

| Corporation/Subsidiary    | Location          | 1988 Employment |               |                 |                   | Total      |
|---------------------------|-------------------|-----------------|---------------|-----------------|-------------------|------------|
|                           |                   | Alaska Male     | Native Female | Non-Native Male | Non-Native Female |            |
| Arctic Slope Reg. Corp.   | Barrow            | *               | *             | *               | *                 | *          |
| Arctic Slope Reg. Corp.   | Anchorage         | 0               | 1             | 1               | 0                 | 2          |
| Arctic Slope Reg. Constr. |                   |                 |               |                 |                   |            |
| <b>Natchiq, Inc.</b>      | <b>Anchorage</b>  | <b>(3</b>       | <b>(2</b>     | <b>(76</b>      | <b>(13</b>        | <b>(94</b> |
|                           | <b>Prudhoe B.</b> | <b>(</b>        | <b>(</b>      | <b>(</b>        | <b>(</b>          | <b>(</b>   |
| Houston Contracting       | Prudhoe B.        | 44              | 1             | 260             | 11                | 316        |
| Alaska Pet. Cent.r.       | Prudhoe B.        | 48              | 13            | 690             | 55                | 806        |
| ThermaSave/APC            | Prudhoe B.        | 0               | 0             | 28              | 3                 | 31         |
| Tapsco                    | Kenai             | 0               | 0             | 24              | 3                 | 27         |
| ASRC Communications       |                   |                 |               |                 |                   |            |
| Barrow Cable TV           | Barrow            | 2               | 1             | 1               | 1                 | 5          |
| Executone of Alaska       | Anchorage         | *               | *             | *               | *                 | *          |
| Metrocom - KLSR           |                   | *               | *             | *               | *                 | *          |
| Inupiat Consol. Ent.      |                   |                 |               |                 |                   |            |
| Eskimos Inc.              | Barrow            | *               | *             | *               | *                 | *          |
| SKW/Eskimos Inc.          | Various           | **              | **            | **              | **                | **         |
| SKW Constructors          | Anchorage         | 0               | 0             | 0               | 0                 | 0          |
| Piquniq Management Corp.  |                   | 0               | *             | 0               | *                 | 0          |
| Arctic Slope Cons. Eng.   | Barrow            | 1               | 1             | 3               | 0                 | 5          |
|                           | Anchorage         | 2               | 2             | 39              | 7                 | 50         |
|                           | Fairbanks         | 0               | 0             | 9               | 3                 | 12         |
|                           | Soldotna          | 0               | 0             | 3               | 0                 | 3          |
| Inupiat Drillers          |                   |                 | *             |                 |                   |            |
| Tundra Tours Inc.         |                   |                 |               |                 |                   |            |
| Top of the World Hotel    | Barrow            | 0               | 2             | 2               | 1                 | 5          |
| Tundra Tours Bus co.      | Palmer            | 1               | 1             | 49              | 49                | 100        |

\* Employment figures not provided.

\*\* See Table 2.

Source: Arctic Slope Regional Corporation and subsidiaries.

TABLE 2

BUSINESS ACTIVITY AND EMPLOYMENT  
SKW/ESKIMOS, INC. AND PARTNERSHIPS  
1987

| <u>Village</u> | <u>1987 Work Volume</u> | <u>Total Employees</u> | <u>Local Hire</u> | <u>%</u>   | <u>Native Hire</u> | <u>%</u>   | <u>Local Wages</u> | <u>Local * Purchasing</u> |
|----------------|-------------------------|------------------------|-------------------|------------|--------------------|------------|--------------------|---------------------------|
| Atqasuk        | \$ 4,860,946            | 83                     | 68                | 80%        | 66                 | 80%        | \$ 229,535         | \$ 111,687                |
| Barrow         | 10,596,631              | 120                    | 72                | 60%        | 61                 | 51%        | 1,429,677          | 2,003,933                 |
| Kaktovik       | 3,372,064               | 79                     | 50                | 63%        | 48                 | 61%        | 274,375            | 166,479                   |
| Nuiqsut        | 559,501                 | 16                     | 13                | 81%        | 13                 | 81%        | 45,908             | 8,691                     |
| Point Hope     | 3,580,865               | 29                     | 23                | 79%        | 23                 | 79%        | 127,901            | 123,976                   |
| Wainwright     | 1,159,719               | 38                     | 34                | 89%        | 33                 | 87%        | 60,553             | 89,540                    |
| <u>TOTAL</u>   | <u>\$24,129,726</u>     | <u>365</u>             | <u>260</u>        | <u>71%</u> | <u>244</u>         | <u>67%</u> | <u>\$2,167,949</u> | <u>\$2,504,306</u>        |

\* Does not include local purchasing by Subcontractors.

Note: SKW/Eskimos Inc. operates and manages construction projects in all North Slope Borough villages. In addition to its own work, it has combined forces with the following village corporations:

- UIC Construction, a subsidiary of Ukpeagvik Inupiat Corporation; SKW/Eskimos, Inc. is a 50% joint-venturer for-work in and around Barrow; 1987 work included the Barrow utilidor and gas field projects, and completion of the Atqasuk water and sewer contract.
- Atqasuk Construction Inc., a subsidiary of Atqasuk Corporation; SKW/Eskimos, Inc. is the minority member in this partnership which recently completed a major remodeling of the Atqasuk community center.
- Kaktovik Constructors. SKW/Eskimos, Inc. is the minority member in this partnership, designed for work in and around Barter Island. Current work includes Kaktovik's sewage separator project, as well as occasional casual oil field support work.
- Wainwright Constructors. SKW/Eskimos, Inc. is the minority member in this partnership with the Olgoonik Corporation. The partnership will complete Wainwright's new water tanks this summer (1988), and was recently awarded the village generator replacement project.
- Kuukpik Construction Corporation, a subsidiary of Kuukpik Corporation. SKW/Eskimos, Inc. shares equally in this partnership, created for work in and around the village of Nuiqsut. There is currently no work being performed by the partnership.

Source: SKW/Eskimos, Inc., February 1988.

Although the data for the Arctic Slope Regional Corporation are incomplete, it is apparent that this company has become increasingly complex as its interests have become more diversified. Furthermore, despite data deficiencies, it is apparent that this corporation has maintained an important presence in the North Slope region, in Barrow and the **villages**, as well as in the Prudhoe Bay area. In this respect, it more closely resembles the operations of NANA than the other regional corporations examined as part of this project.

#### **B. UKPEAGVIK INUPIAT CORPORATION**

The **Ukpeagvik Inupiat Corporation (UIC)** is the ANCSA village corporation for Barrow. It is headquartered in that community and, according to its president, currently has about **2,447** shareholders. He estimated that **close to 65** percent of **all** shareholders lived in Barrow.

In addition to the parent corporation, **UIC** presently has four subsidiary companies. These are **UIC Construction, Inc., Umialik Insurance Company, Bowhead Transportation Inc.** and **Barrow Technical Services**. The corporation is also involved in several **joint** ventures although it is reportedly phasing out of this type of business.

UIC maintains records of shareholder hire but does not have that information broken down by gender. As of September 1988, **UIC** indicated it had a total of **185** employees, **94** (or 51 percent) of whom were shareholders. It should be noted that not **all** of these employees are full-time or

permanent. In particular, employment in construction varies significantly from month to month (in July 1988 UIC Construction reported a total of 91 employees versus 118 in September), depending on the number and type of projects in which it is involved. Similarly, some of the employment with the parent corporation itself is seasonal. Nevertheless, despite these inconsistencies in the data, it is apparent that UIC is a significant employer in the Barrow area.

The following employment information was provided by UIC and its subsidiary companies:

**TABLE 3**  
**1988 EMPLOYMENT**  
**UKPEAGVIK INUPIAT CORPORATION**

| <u>Corporation/Subsidiary</u> | <u>Location</u> | <u>1988 Employment</u> |               |                   |               | <u>Total</u>      |
|-------------------------------|-----------------|------------------------|---------------|-------------------|---------------|-------------------|
|                               |                 | <u>Alaska Native</u>   |               | <u>Non-Native</u> |               |                   |
|                               |                 | <u>Male</u>            | <u>Female</u> | <u>Male</u>       | <u>Female</u> |                   |
| UIC                           | Barrow          | 31                     |               | 23                |               | 54                |
| UIC Construction              | Barrow          | 47*                    |               | 14*               |               | 61*               |
| UIC Construction              | Anchorage       | 8*                     |               | 22*               |               | 30*               |
| Umialik Insurance Co.         | Anchorage       | 0                      | 0             | 3                 | 5             | 8                 |
| Bowhead Transportation        | Barrow          | 1**                    | 0             | 1**               | 0             | 2**               |
| Bowhead Transportation        | Seattle         | 0                      | 0             | 2                 | 1             | 3                 |
| Barrow Technical Svces        | Barrow          |                        | ***           |                   | ***           | ***               |
| <b><u>TOTAL</u></b>           |                 | <b><u>87</u></b>       |               | <b><u>71</u></b>  |               | <b><u>158</u></b> |

\* Employment as of July 1988. Total employment of UIC Construction in September 1988 was reported to be 118, 53 percent of whom were shareholders.

\*\* Seasonal employment (4 to 5 months).

\*\*\* Barrow Technical Services is operated by directors who are also UIC employees.

Source: Ukpeagvik Inupiat Corporation and subsidiaries.

These data reveal that UIC is unlike most other **ANCSA** village corporations examined as part of this project in several respects. The corporation (including its subsidiaries) has a large number **of** employees, it employs a relatively high proportion of non-Natives, and it has significant involvement outside the immediate Barrow **area**.

### **C. OLGOONIK CORPORATION**

The **Olgoonik** Corporation is headquartered in **Wainwright** and is the **ANCSA village** corporation for that community. According to corporate spokesmen, **Olgoonik** has approximately **367** shareholders of whom close to two-thirds are estimated to **live** in **Wainwright**.

Aside from its administrative offices, **the** activities in which the **Olgoonik** Corporation is currently involved include a hotel/restaurant, a village **store**, a **fuel** joint venture (with **Eskimos, Inc.**) and a construction company. Employment in construction varies significantly according to the **level** of activity, **while** that associated with the hotel/restaurant also varies for the same reasons. Moreover, both of these activities are associated with high rates of personnel turnover, so that figures relating **to** composition of employment by race and sex do not necessarily hold true year-round or even from week to week. For example, the employment figures provided by **Olgoonik** Corporation cited below as of June 1988 list only one non-Native female employed. **In** September 1988, however, three non-Native females were said to be employed in the corporation's hotel/restaurant operations.



According to Olgoonik spokesmen, the corporation's administrative offices employed 4 (1 male and 3 females) full-time persons in September 1988, all of them Alaska Natives. As of the same date, the corporation's store employed 1 full-time Alaska Native female (plus an occasional part-time person) and the fuel joint venture employed 3 Alaska Native males. The hotel/restaurant employed 7 Alaska Native females and 1 Alaska Native male, plus 3 non-Native females and 1 non-Native male. It is assumed that the remaining employees listed by Olgoonik in June 1988 were involved in construction activities or in temporary jobs associated with the hotel/restaurant.

TABLE 4

1988 EMPLOYMENT  
OLGOONIK CORPORATION

| <u>Corporation/Subsidiary</u> | <u>Location</u> | <u>1988 Employment</u>    |                             |                        |                          | <u>Total</u> |
|-------------------------------|-----------------|---------------------------|-----------------------------|------------------------|--------------------------|--------------|
|                               |                 | <u>Alaska Native Male</u> | <u>Alaska Native Female</u> | <u>Non-Native Male</u> | <u>Non-Native Female</u> |              |
| Olgoonik Corporation          | Wainwright      | 27                        | 25                          | 3                      | 1                        | 56           |

source: Olgoonik Corporation.

### III . NANA REGION

In this region, the NANA Regional Corporation, the Kiki ktagruk **Inupiat** Corporation and the **Maniilaq** Association were examined as a means of determining the importance of those Native organizations as employers.

Partly because there is **only** one independent **village** corporation in the NANA region (the Ki ki **ktagruk Inupi** at Corporation **based in Kotzebue**), NANA is a particularly strong regional force. **On** the other hand, because it must represent village as **well** as regional interests, it is probably under greater pressure to involve itself at the **local level** than are most other regional **ANCSA** corporations. Outside the region, NANA and **its** subsidiaries are heavily involved in the North **Slope** and Anchorage areas.

The **Maniilaq** Association provides a wider range of health and social service programs to villages in the NANA region, plus Point Hope (in the North Slope Borough), than do some of the other regional non-profit corporations, although **U.S.** Department of Labor and Village Public Safety Officer programs are provided through a separate organization, **Maniilaq** Manpower. All employment with the **Maniilaq** Association is based within the NANA region.

The Kiki ktagruk **Inupiat** Corporation is a relatively large village corporation with most of its investments being in Kotzebue although the corporation does have some involvement in the Anchorage area. In many

respects, its operations are similar **to those** of the **Sitnasuak** Corporation, **based in Nome.**

#### **A. NANA REGIONAL CORPORATION**

The NANA Regional Corporation, **Inc. is** headquartered **in Kotzebue but** also maintains an office in Anchorage. Currently, NANA has approximately **4,600** shareholders, of whom **all but about** 500 are said to **live in the** NANA region. (This proportion of residents seems high when compared with **the** proportion of **Kotzebue** shareholders resident **in** that community]. **NANA is unique** in that 10 villages (**i.e. all except for Kotzebue**) elected to merge with the regional corporation in **1976** rather than pursuing individual corporate identities. -

Under terms of the Alaska Native **Claims Settlement Act, as** amended, **NANA** is entitled to receive approximately 1,900,000 acres of surface and subsurface estate, most of it located around the villages in the region, **plus** another 365,000 acres of subsurface estate **only.** The primary development project **on NANA lands** is the Red Dog mine project which the corporation **leased** to **Cominco, Ltd.** in **1982.** The **NANA/Cominco** agreement gives **Cominco** the **right to build** and operate the mine and to market the metals. NANA is to receive an escalating percentage of royalties, eventually receiving a **50** percent share of the mineral profits. Present plans **call** for production at the mine to begin in **early 1990.** At peak production, the mine is expected to produce about 5 percent of the world's zinc supply and provide approximately **360** direct jobs.

In addition to the parent company, NANA has a wholly owned operating subsidiary, NANA Development Corporation, which oversees the various region-based and Anchorage-based companies and joint venture operations in which the company is involved. Region-based businesses include fuel sales distributorships in Ambler, **Buckland** and **Deering**; a jade mine and jade processing facility (Jade Mountain Products); real estate rentals (including the Drift **Inn** which is an office and apartment building, plus the **Kotzebue** Multi-Purpose Building which houses office space, the jade processing facility and the Museum of the Arctic); a salmon buying business (NANA Seafoods); and an hotel (**Nullagvik**) in **Kotzebue**. A major portion of other businesses in which NANA is involved are based in Anchorage but function primarily in the North **Slope** area. These include Arctic Utilities, **Inc.**, the Arctic Caribou **Inn**, **Purcell** Services (North Slope and Anchorage) and NANA **Oilfield** Services, Inc. (together with its subsidiary, Great Northern Express). In addition, the **NANA/Marriott** joint venture employs a large number of **people in** catering and housekeeping services in the Anchorage and North **Slope** areas and at the Red Dog mine site. **NANA-DMTS** Services Ltd. provides catering, housekeeping and camp management services for the construction camp associated with port development for the Red Dog mine project.

Aside from the above companies, NANA **also** owns **50** percent of Sovik, a company which leases vehicles to Standard Alaska Production Company at **Prudhoe** Bay. **It also** is a 50 percent owner of **NANA-Coates** Diamond Drilling, Inc., a mineral exploration drilling company currently active in

TABLE 5

**1988 EMPLOYMENT**  
**NANA REGIONAL CORPORATION, SUBSIDIARIES AND JOINT VENTURES**

| Corporation/Subsidiary                      | Location                | 1988 Employment |        |            |        | Total |
|---|-------------------------|-----------------|--------|------------|--------|-------|
|   |                         | Alaska Native   |        | Non-Native |        |       |
|   |                         | Male            | Female | Male       | Female |       |
| NANA Regional Corp.                         | Kotzebue                | 4               | 3      | 1          | 0      | 8     |
| NANA Regional Corp.                         | Anchorage               | 0               | 1*     | 2          | 0      | 3     |
| NANA Regional Corp.                         | Fairbanks               | 0               | 1**    | 0          | 0      | 1     |
| NANA Development Corp.                      | Kotzebue                | 3               | 3      | 0          | 0      | 6     |
| NANA Development Corp.                      | Anchorage               | 3               | 19*    | 5          | 10     | 37    |
| Ambler Fuel                                 | Ambler                  | 0               | 1      | 0          | 0      | 1     |
| Buckland Fuel                               | Buckland                | 1               | 0      | 0          | 0      | 1     |
| Deering Fuel                                | Deering                 | 1               | 0      | 0          | 0      | 1     |
| Jade Mountain                               | Kotzebue                | 4               | 0      | 0          | 0      | 4     |
| NANA Seafoods                               | Kotzebue                | 7               | 3      | 0          | 0      | 10    |
| Nullagvik Hotel                             | Kotzebue                | 17*             | 14*    | 2          | 2      | 35    |
| NANA Museum                                 | Kotzebue                | 2               | 1      | 0          | 0      | 3     |
| Arctic Caribou Inn                          | North Slope             | 4               | 1      | 2          | 0      | 7     |
| Arctic Utilities, Inc.                      | North Slope             | 5               | 0      | 2          | 0      | 7     |
| Purcell Services, Ltd.                      | (North Slope)           | 7*              | 6      | 105        | 10     | 128   |
| NANA Oilfield Services                      | (Anchorage North Slope) | 6**             | 9      | 20         | 5      | 40    |
| NANA-Marriott                               | (Anchorage Various)     | 40*             | 36*    | 172        | 75     | 323   |
| NANA DeLong Mountains Transportation System | Red Dog port site       | 7               | 12     | 4          | 0      | 23    |
| Alaska United Drilling                      | North Slope             | 47*             | 0      | 119        | 3      | 169   |

\* Employment figures include descendants of NANA shareholders who do not presently hold NANA stock.

\*\* Dormitory parent for NANA students at the University of Alaska.

**Note:** Employment figures listed above are not necessarily full-time or permanent. Village fuel employment is all part-time, while that associated with the NANA Museum is seasonal, as is some of that associated with the Nullagvik Hotel. Employment with NANA Seafoods is all seasonal and is not listed above, while figures listed above for Purcell Services, NANA Oilfield Services, NANA-Marriott and Alaska United Drilling is total employment through May 24, 1988 rather than average annual employment.

Source: NANA Regional Corporation.

the Juneau, Prince of Wales Island and **Nome** areas. This company was formerly active in the Red **Dog** mine project. Final 1 y, NANA Development Corporation is involved in Alaska United Drilling, **Inc.**, a joint venture with Veto, Inc., Bristol Bay Native Corporation and **Sealaska, Inc.**, to provide drilling and well servicing operations on the North Slope.

Shareholder employment is a high priority **of** the NANA Regional Corporation and the company periodically sets objectives for shareholder hire **not only** for itself and NANA Development Corporation, but **also** for subsidiaries and joint venture operations.

The employment information shown in **Table 5** was obtained from NANA and reflects employment by the parent **corporation**, subsidiaries and joint ventures as of May **24, 1988**. As noted, these figures do not necessarily equate to average annual full-time employment.

## **B. MANIILAQ ASSOCIATION**

The **Maniilaq** Association has its roots **in** the Northwest Alaska Native Association which was founded in **1966**. **In 1975, Maniilaq** merged with the Kotzebue Area Health Corporation so that a broad range of health and social services programs to the villages of the NANA region (plus Point Hope) are provided from a single agency. Reflecting the consolidation of programs under one agency (with the Village Public Safety Officer program being a notable exception), **Maniilaq** had almost twice as many employees as any of the other regional non-profit corporations covered by this project.

Maniilaq is an important employer at its Kotzebue headquarters and in the villages which it serves. No employees are based outside the NANA region except at Point Hope (where the salaries of village health aides are supplemented by the North Slope Borough).

TABLE 6

1988 EMPLOYMENT  
MANIILAQ ASSOCIATION

| <u>Corporation/Subsidiary</u> | <u>Location</u>       | <u>1988 Employment</u> |               |                   |               | <u>Total</u> |
|-------------------------------|-----------------------|------------------------|---------------|-------------------|---------------|--------------|
|                               |                       | <u>Alaska Native</u>   |               | <u>Non-Native</u> |               |              |
|                               |                       | <u>Male</u>            | <u>Female</u> | <u>Male</u>       | <u>Female</u> |              |
| Maniilaq Association          | Kotzebue              | 23                     | 105           | 18                | 32            | 178          |
|                               | Ambler                | 0                      | 2             | 0                 | 0             | 2            |
|                               | Buckland              | 1                      | 5             | 0                 | 0             | 6            |
|                               | Deering               | 0                      | 1             | 0                 | 0             | 1            |
|                               | Kiana                 | 0                      | 7             | 0                 | 0             | 7            |
|                               | Kivalina              | 0                      | 4             | 0                 | 0             | 4            |
|                               | Noatak                | 1                      | 11            | 0                 | 0             | 12           |
|                               | Noorvik               | 1                      | 7             | 0                 | 0             | 8            |
|                               | Selawik               | 1                      | 8             | 0                 | 0             | 9            |
|                               | Shungnak              | 0                      | 3             | 0                 | 0             | 3            |
|                               | Siivuuniigvik<br>Camp | 16                     | 12            | 0                 | 0             | 28           |
|                               | <u>TOTAL</u>          | <u>43</u>              | <u>165</u>    | <u>18</u>         | <u>32</u>     | <u>258</u>   |

Source : Maniilaq Association.

The above listing does not equate to average annual full-time employment as some employees are part-time, while those associated with the Siivuuniigvik Camp are seasonal. Nevertheless, it does show several significant features. Close to 70 percent (and probably more than 75 percent if the figures were converted to average annual full-time employment) of the jobs are based in Kotzebue, the regional center. Furthermore, approximately

three quarters (**76.4** percent) **of** the jobs are held **by** females, with Alaska Native females alone accounting for 64 percent of the total. Finally, **while** non-Natives make up a significant proportion of employment with **Maniilaq** in **Kotzebue**, employment at the village **level** is exclusively Alaska Native.

### **C. KIKIKTAGRUK INUPIAT CORPORATION**

The **Kikiktagruk Inupiat** Corporation is the **only** village corporation in the NANA region which **did** not merge with the regional corporation. **It** is headquartered in **Kotzebue**. According to its president (who was personally interviewed in **Kotzebue** while the contractor was in Kotzebue on unrelated business), the corporation had **1,952** shareholders in **1987**, of whom approximately **1,200** lived in **Kotzebue**.

**Kikiktagruk Inupiat** Corporation and its subsidiary, **Kotzebue** Development Corporation, employed a total of **51** persons in **1988**. Except for one employee of the parent corporation who is based in Anchorage, all employment with the parent corporation and its subsidiary is based in **Kotzebue**.

The parent corporation is primarily engaged in administrative and real estate activities. Included among the **latter** are ownership of a 29-unit **and** a 41-unit apartment complex in Kotzebue, plus ownership of the Eskimo Building (which houses the Post Office, **Maniilaq** Corporation, an electronic repair shop and **KIC's** offices) and the **Alaska** Commercial building. In



addition, the corporation leases lands to several agencies, such as the National Guard and the Department of Education, and is in the process of trading lands with the Indian Health Service for the new hospital site. Outside Kotzebue, KIC is the owner of Sunshine Plaza in downtown Anchorage and 3 acres in the Potter Marsh area outside Anchorage.

Kotzebue Development Corporation is the owner and manager of Hanson Trading Company, an asset which the corporation acquired in 1983. It is a general store, one of two major such stores in Kotzebue (the other is the Alaska Commercial Company).

TABLE 7

1988 EMPLOYMENT  
KIKIKTAGRUK INUPIAT CORPORATION

| Corporation/Subsidiary    | Location  | 1988 Employment    |                      |                 |                   | Total     |
|---------------------------|-----------|--------------------|----------------------|-----------------|-------------------|-----------|
|                           |           | Alaska Native Male | Alaska Native Female | Non-Native Male | Non-Native Female |           |
| Kikiktagruk Inupiat Corp. | Kotzebue  | 9                  | 2                    | 1               | 0                 | 12        |
| Kikiktagruk Inupiat Corp. | Anchorage | 0                  | 0                    | 1               | 0                 | 1         |
| Kotzebue Dev. Corp.       | Kotzebue  | 11                 | 17                   | 7               | 3                 | 38        |
| <u>TOTAL</u>              |           | <u>20</u>          | <u>19</u>            | <u>9</u>        | <u>3</u>          | <u>51</u> |

Source: Kikiktagruk Inupiat Corporation.

An examination of employment by race and sex indicates that males outnumber females by a 75 percent to 25 percent margin in the parent corporation. However, female employment slightly outnumbers that of males at the Hanson Trading Company. By race, slightly more than three-quarters (76.5 percent) of all employment with KIC and its subsidiary is Alaska Native.

#### IV. BERING STRAITS REGION

Within the Bering Straits region, the Bering Straits Native Corporation, **Kawerak, Inc.** and the **Sitnasuak** Native Corporation were reviewed in terms of their importance as employers.

The Bering Straits Native Corporation has had serious financial problems in **recent** years which has resulted in a severe curtailment of its business activities. Although the corporation maintains offices in both Nome and Anchorage, it currently employs very few people. **Unlike** NANA, which is a major economic force in **the** Kotzebue area, Bering Straits plays a relatively minor role in the economy of the Nome region.

**Kawerak, Inc.** provides a **wide** range of **social** and economic programs to villages within the **Bering** Straits region. However, health services in the region are provided by the Norton Sound Health Corporation. In addition, the Nome Eskimo Community, an **IRA** (Indian Reorganization Act) government, provides some community-based employment and vocational education programs in **Nome**. **All** employment **with Kawerak, Inc. is** based within the Bering Straits region.

The **Sitnasuak** Native Corporation, **like** the **Kikiktagrak Inupiat** Corporation, is a relatively large village corporation. All of its investments are in the immediate Nome area.

#### A. **BERING STRAITS NATIVE CORPORATION**

The **Bering Straits Native** Corporation is headquartered in Nome, but also maintains a **small office** in Anchorage. According to its **most recent annual report** (1987), **the** Bering Straits Native Corporation **has 6,167** shareholders, approximately 70 percent of whom **are estimated** to live within the region. There are **17** Native village corporations located within the **Bering Straits Native Corporation** region.

On **March 5, 1986**, the Bering Straits Native Corporation and its wholly owned subsidiary, Bering Straits Investment Company, **filed in** the U.S. Bankruptcy **Court** to reorganize under Chapter **11** of the Bankruptcy Code. However, the operating subsidiaries of Bering Straits Investment Company (**Bering Straits Development Company and Grand Alaska Industries**) have **not filed** for protection under Chapter **11**. Grand **Alaska** Industries is currently inactive but Bering Straits Development Company is conducting its activities outside the jurisdiction **of** the Court. The Bering Straits Native Corporation's joint venture subsidiaries - **Golden Glacier Inc.**, Bering Straits Drilling, **Inc.** and Cape Nome **Quarry** - are described by the Corporation as being semi-active.

Employment by the Bering Straits Regional Corporation currently accounts for **6** full-time jobs in Nome **plus** the president of the Corporation who is salaried but lives in **Unalakleet**. Another 2 full-time employees of the Corporation are based **in** Anchorage and the Bering Straits Development Company has an employee associated with its trailer court operations in

**Valdez.** A review of employment by race and sex indicates an even distribution of males and females. Within the **Bering** Straits region, however, Alaska Natives account for 6 of the **7** company employees. Outside the region, all corporation employees are presently non-Native.

**TABLE 8**  
**1988 EMPLOYMENT**  
**BERING STRAITS NATIVE CORPORATION**

| <u>Corporation/Subsidiary</u> | <u>Location</u>        | <u>1988 Employment</u> |                 |                    |                 | <u>Total</u>     |
|-------------------------------|------------------------|------------------------|-----------------|--------------------|-----------------|------------------|
|                               |                        | Alaska Native<br>Male  | Female          | Non-Native<br>Male | Female          |                  |
| Bering Straits                | <b>Nome</b>            | <b>2</b>               | <b>3</b>        | <b>1</b>           | 0               | <b>6</b>         |
| <b>Bering</b> Straits         | <b>Unalakleet</b>      | <b>1</b>               | 0               | <b>0</b>           | 0               | <b>1</b>         |
| Bering Straits                | Anch.                  | <b>0</b>               | 0               | <b>1</b>           | <b>1</b>        | <b>2</b>         |
| Bering Straits                | <b>Dev. Co. Valdez</b> | <b>0</b>               | 0               | <b>0</b>           | <b>1</b>        | <b>1</b>         |
| <b><u>TOTAL</u></b>           |                        | <b><u>3</u></b>        | <b><u>3</u></b> | <b><u>2</u></b>    | <b><u>2</u></b> | <b><u>10</u></b> |

Source: Bering Straits Native Corporation.

A look at earlier levels of employment of the Bering Straits Regional Corporation in Nome undertaken by Impact Assessment, Inc. (January 1987) provides some indication of the declining fortunes of this regional corporation. Employment in the early **1980s** was estimated at 22 persons, dropping to around **12** by the **mid-1980s** and to 8 in 1987.

**B. KAWERAK, INC.**

Kawerak, Inc. was incorporated in **1973** and was developed under the express authority and guidance of the Bering Straits Native Association. This

association **consists of** representatives from the region's **IRA** and traditional councils.

**Kawerak's stated goal is to promote the social and economic welfare of Native people within the Bering Straits region. Currently, Kawerak operates the following programs: Eskimo Heritage Program, Reindeer Herders Association, Educational and Vocational Assistance, Housing, Natural Resources, Adult Basic Education, Tribal Operations and Rights Protection, Village Public Safety Officers, Head Start, JTPA, Social Services and Realty.**

**Kawerak is an important employer at its Nome headquarters as well as in the villages it serves. However, its role is a great deal smaller than that assumed by Maniilaq in the NANA region. The Norton Sound Health Corporation, which operates the Nome hospital and is responsible for a wide range of health and social service programs, has a greater number of employees than does Kawerak while the Bering Straits Regional Housing Authority is another (although smaller) independent regional entity.**

**All Kawerak employees are based inside the Bering Straits region, with 58 percent stationed in Nome itself. Close to 80 percent of Kawerak's Nome headquarters staff is female. However, at the village level, male employees slightly outnumber females, primarily because of the Village Public Safety Officer program. Overall, 64 percent of Kawerak employees in 1988 were female and 85 percent were Alaska Native.**

The following breakdown of employment was provided by Kawerak:

TABLE 9

**1988 EMPLOYMENT  
KAWERAK, INC.**

| <u>Corporation/Subsidiary</u>                                  | <u>Location</u> | <u>1988 Employment</u>    |               |                        |               | <u>Total</u> |
|--|-----------------|---------------------------|---------------|------------------------|---------------|--------------|
|  |                 | <u>Alaska Native Male</u> | <u>Female</u> | <u>Non-Native Male</u> | <u>Female</u> |              |
| <b>Kawerak, Inc.</b>   | Nome            |                           |               |                        |               |              |
| Admi ni strati on  |                 | 1                         | 3             | 0                      | 0             | 4            |
| <b>Adult Basic</b> Educati on                                  |                 | 0                         | 2             | 1                      | 1             | 4            |
| Accounti ng  |                 | 0                         | 5             | 0                      | 0             | 5            |
| <b>Adult Vocati onal</b><br>Trai ni ng/Di rect<br>Empl oym ent |                 | 0                         | 2             | 0                      | 0             | 2            |
| <b>Headstart</b>   |                 | 2                         | 4             | 0                      | 4             | 10           |
| Housi ng   |                 | 1                         | 0             | 0                      | 0             | 1            |
| <b>JTPA</b>  |                 | 0                         | 3             | 0                      | 0             | 3            |
| Natural Resources  |                 | 1                         | 0             | 0                      | 0             | 1            |
| Rei ndeer Herders  |                 | 1                         | 2             | 0                      | 0             | 3            |
| <b>Social</b> Servi ces  |                 | 0                         | 4             | 0                      | 2             | 6            |
| <b>Tribal</b> Operati ons                                      |                 | 0                         | 3             | 1                      | 0             | 4            |
| <b>Village</b> Public Safety<br>Offi cer Program               |                 | 0                         | 1             | 0                      | 0             | 1            |
| Real ty  |                 | 1                         | 1             | 1                      | 0             | 3            |
| <u>Sub-Total</u>   |                 | <u>7</u>                  | <u>30</u>     | <u>3</u>               | <u>7</u>      | <u>47</u>    |
| <b>Kawerak, Inc.</b>   | Vill ages       |                           |               |                        |               |              |
| Adult Basic Educati on   |                 | 1                         | 5             | 1                      | 0             | 7            |
| Headstart  |                 | 3                         | 9             | 0                      | 0             | 12           |
| Village <b>Public</b> Safety<br>Offi cer Program               |                 | 13                        | 1             | 1                      | 0             | 15           |
| <u>Sub-Total</u>   |                 | <u>17</u>                 | <u>15</u>     | <u>2</u>               | <u>0</u>      | <u>34</u>    |
| <u>TOTAL</u>   |                 | <u>24</u>                 | <u>45</u>     | <u>5</u>               | <u>7</u>      | <u>81</u>    |

Source: Kawerak, Inc.

**C. SITNASUAK NATIVE CORPORATION**

Sitnasuak Native Corporation was incorporated February 9, 1973 under terms of the Alaska Native Claims Settlement Act of 1971. It is the village corporation for Alaska Natives enrolled to Nome and is headquartered in that community. According to the Corporation's executive director, Sitnasuak currently has approximately 2,200 stockholders, of whom close to 60 percent live outside Nome.

The Corporation directly employs 10 full-time employees (including one person added since a May 1988 count by Kevin Waring Associates) and 1 part-time person, plus another 15 full-time employees in companies operated by the Corporation's wholly owned subsidiary, Nome Native Community Enterprises, Inc. All of these businesses are located in Nome. A current (June 1988) breakdown of employment by race and sex is as follows:

TABLE 10  
1988 EMPLOYMENT  
SITNASUAK NATIVE CORPORATION

| <u>Corporation/Subsidiary</u> | <u>Location</u> | <u>1988 Employment</u>    |                   |                        |                   | <u>Total</u>       |
|-------------------------------|-----------------|---------------------------|-------------------|------------------------|-------------------|--------------------|
|                               |                 | <u>Alaska Native Male</u> | <u>Female</u>     | <u>Non-Native Male</u> | <u>Female</u>     |                    |
| Sitnasuak Nat. Corp.          | Nome            | 3.5                       | 4.0               | 3.0                    | 0.0               | 10.5               |
| Sitnasuak Operations Center   | Nome            | 0.0                       | 2.0               | 0.0                    | 0.0               | 2.0                |
| Bonanza Garage                | Nome            | 1.0                       | 0.0               | 1.0                    | 0.0               | 2.0                |
| Bonanza Gas Station           | Nome            | 4.0                       | 0.0               | 2.0                    | 0.0               | 6.0                |
| Country Store                 | Nome            | 2.0                       | 1.0               | 2.0                    | 0.0               | 5.0                |
| <b><u>TOTAL</u></b>           |                 | <b><u>10.5</u></b>        | <b><u>7.0</u></b> | <b><u>8.0</u></b>      | <b><u>0.0</u></b> | <b><u>25.5</u></b> |

Source: Sitnasuak Native Corporation, June 1988.

A review of employment by race **and** sex indicates that almost 70 percent of the corporation's employees are Alaska Native, while a similar but slightly higher proportion (72.5 percent) of all corporation employees are male. **All** non-Native employees are male.



## V. BETHEL REGION

Here, the **Calista** Corporation, **the Association of Village Council Presidents, Inc. (AVCP)** and the **Alakanuk Native** Corporation were examined to determine their significance as employers within and outside the **Bethel** region.

**Although it** has the largest Native population of Alaska's **twelve ANCSA** regions, the **Bethel** region is **also the** most economically disadvantaged. Undoubtedly, this has been a **factor in** decisions taken **by Calista to** concentrate its investments (and employment] **in** areas outside its home region.

By **contrast**, the program delivery activities of the **AVCP** are necessarily concentrated within the **Bethel** region. The **only** village corporation examined in this region, **Alakanuk Natives**, was **also** a locally significant employer.

### A. **CALISTA** CORPORATION

The **Calista** Corporation incorporated on June **1, 1972** and **is** headquartered in Anchorage. With **56** member villages, **Calista** has the largest enrollment of any of the **twelve** Alaska-based regional Native corporations. According to **Calista** personnel, the corporation had **13,306** shareholders at the time of passage of the **Alaska Native Claims** Settlement Act and as of March **31**,

1988 had 12,459 voting shareholders. Not more than 2,000 current shareholders are believed to **live** outside Alaska.

The record **of** the **Calista** Corporation's development projects has, for the most part, been disappointing. Over the **years**, the Corporation has been involved in a number **of** different enterprises, the largest of which was the Sheraton Anchorage Hotel. However, **this** venture was **sold** to a South Korean corporation in July **1988**.

Table **11** represents full-time permanent employment **by Calista** and its subsidiaries as of September **1988**. In addition, **Calista** Sea Foods, Inc. employs seasonal cannery workers in its **surimi** seafood processing **plant**. Some of these seasonal workers are **Alaska** Native as the company has actively recruited for employees in Alaska. Similarly, **Calista** Well Services, Inc. is involved **in a joint** venture operation on the North Slope which currently (September **1988**) employs **3 Calista** shareholders in its seasonal drilling activities.

**It** is noteworthy that the **Calista** Corporation currently has no employees within the **Calista** region. Although this has not always been the case, **Calista** has historically been involved in few investments in its home area. As of September **1988**, a majority of employees of the parent corporation (57 percent) were Alaska Native, although one-quarter of the Alaska Natives employed were actually enrolled to other regional corporations. **Three-**quarters of the Alaska Natives employed with the parent corporation were female.

**TABLE 11**  
**1988 EMPLOYMENT**  
**CALISTA CORPORATION AND SUBSIDIARIES**

| <u>Corporation/Subsidiary</u> | <u>Location</u> | <u>1988 Employment</u> |               |                   |               | <u>Total</u> |
|-------------------------------|-----------------|------------------------|---------------|-------------------|---------------|--------------|
|                               |                 | <u>Alaska</u>          | <u>Native</u> | <u>Non-Native</u> |               |              |
|                               |                 | <u>Male</u>            | <u>Female</u> | <u>Male</u>       | <u>Female</u> |              |
| Calista Corporation           | Anchorage       | 3                      | 9             | 5                 | 4             | 21           |
| Stewart Title of Alaska       | Anchorage       | 2                      | 0             | 2                 | 14            | 18           |
| Stewart Title of Alaska       | Fairbanks       | 0                      | 0             | 2                 | 8             | 10           |
| Calista Well Services, Inc.   | Anchorage       | 1                      | 0             | 0                 | 0             | 1*           |
| Calista Sea Foods, Inc.       | Olympia, Wa.    | 0                      | 0             | 10                | 3             | 13*          |
| <u>TOTAL</u>                  |                 | <u>6</u>               | <u>9</u>      | <u>19</u>         | <u>29</u>     | <u>63</u>    |

\* Excludes seasonal drilling and cannery workers.

Source : Calista Corporation, September 1988.

Calista's major subsidiary is presently Stewart Title of Alaska, a title insurance company with offices in Anchorage and Fairbanks. All but two of this company's current (September 1988) employees are non-Native, with 22 of the total of 28 employees being female. The management of Calista Sea Foods, Inc. is exclusively non-Native and primarily (10 out of 13 positions) male, while management of Calista Well Services, Inc. includes a Native male who is also a Calista employee and a Native male who is a consultant to Calista. Both Calista Sea Foods and Calista Well Services have seasonal employees, some of whom are Alaska Natives.

**B. ASSOCIATION OF VILLAGE COUNCIL PRESIDENTS, INC.**

The Association of Village Council Presidents (**AVCP**) is one of the primary regional non-profit corporations in the **Bethel** region. However, health services to the region are delivered by another provider, the **Yukon-Kuskokwim** Health Corporation, while housing programs are administered through the AVCP Housing Authority.

AVCP has **56** member villages in the Yukon-Kuskokwim region and has by far the largest membership (although not the greatest number of employees) of the regional non-profit corporations. At the village **level**, AVCP maintains **field** offices in Mountain Village and Toksook **Bay**; operates Head Start programs in **Akiachak, Kotlik**, Pilot Station and **Tununak**; and has Village **Public** Safety Officers in close to **half** of its member villages. All told, AVCP currently operates in excess of **20** different programs, including the **whole** realm of Bureau of Indian Affairs programs plus a potpourri of others subcontracted by federal and State agencies.

The following list of employees was provided by AVCP. **It** does not include a summer youth program funded through **JTPA** which provides temporary employment during a **3** month period in approximately half of **AVCP's** villages.

A look at the composition of employment by AVCP indicates that Alaska Natives accounted for a very high (96.9 percent) proportion of employees. Males (**62.3** percent) also outnumbered females, although this is primarily a

result of the Village Public Safety Officer Program which is overwhelmingly dominated by Alaska Native males. Over two-thirds of all employment listed by AVCP in 1988 was based in Bethel.

**TABLE 12**  
**1988 EMPLOYMENT**  
**ASSOCIATION OF VILLAGE COUNCIL PRESIDENTS**

| <u>Corporation</u> | <u>Location</u>  | <u>1988 Employment</u> |           |                     |          | <u>Total</u> |
|--------------------|------------------|------------------------|-----------|---------------------|----------|--------------|
|                    |                  | Alaska Native<br>Male  | Female    | Non--Native<br>Male | Female   |              |
| AVCP               | Bethel           | 51                     | 37        | 1                   | 0        | 89           |
|                    | Akiachak         | 1                      | 3         | 0                   | 0        | 4            |
|                    | Alakanuk         | 1                      | 0         | 0                   | 0        | 1            |
|                    | Aniak            | 1                      | 0         | 0                   | 0        | 1            |
|                    | Chefornak        | 1                      | 0         | 0                   | 0        | 1            |
|                    | Chevak           | 1                      | 0         | 0                   | 0        | 1            |
|                    | Crooked Creek    | 0                      | 0         | 1                   | 0        | 1            |
|                    | Eek              | 1                      | 0         | 0                   | 0        | 1            |
|                    | Emmonak          | 1                      | 0         | 0                   | 0        | 1            |
|                    | Hooper Bay       | 0                      | 1         | 0                   | 0        | 1            |
|                    | Kongiganak       | 1                      | 0         | 0                   | 0        | 1            |
|                    | Kotlik           | 3                      | 2         | 0                   | 0        | 5            |
|                    | Kwethluk         | 1                      | 0         | 0                   | 0        | 1            |
|                    | Kwigillingok     | 1                      | 0         | 0                   | 0        | 1            |
|                    | Lower Kalskag    | 1                      | 0         | 0                   | 0        | 1            |
|                    | Marshall         | 0                      | 0         | 1                   | 0        | 1            |
|                    | Mekoryuk         | 1                      | 0         | 0                   | 0        | 1            |
|                    | Mountain Village | 1                      | 0         | 1                   | 0        | 2            |
|                    | Napakiak         | 1                      | 0         | 0                   | 0        | 1            |
|                    | Napaskiak        | 1                      | 0         | 0                   | 0        | 1            |
|                    | Pilot Station    | 1                      | 3         | 0                   | 0        | 4            |
|                    | Qui nhagak       | 1                      | 0         | 0                   | 0        | 1            |
|                    | Scammon Bay      | 1                      | 0         | 0                   | 0        | 1            |
|                    | Toksook Bay      | 2                      | 0         | 0                   | 0        | 2            |
|                    | Tuntutuliak      | 1                      | 0         | 0                   | 0        | 1            |
|                    | Tununak          | 1                      | 3         | 0                   | 0        | 4            |
|                    | Upper Kalskag    | 1                      | 0         | 0                   | 0        | 1            |
|                    | <u>TOTAL</u>     | <u>77</u>              | <u>49</u> | <u>4</u>            | <u>0</u> | <u>130</u>   |

Source: Association of Village Council Presidents.

c. **ALAKANUK NATIVE CORPORATION**

The Alakanuk Native Corporation is based in **Alakanuk**. According to the Corporation, it has 483 shareholders (although **it listed 72** of them as deceased). Reportedly, **298** shareholders **currently live in Alakanuk**.

All told, the **Alakanuk** Native Corporation was said to **employ 16** persons in **1988**, only one of them non-Native. **Four** persons, including a non-Native male, work in the Corporation's **Alakanuk** office. Another **6** persons, **all** of them Native and four of them female, are employed at the Corporation's Alakanuk Store. Finally, six Native **males are** employed as fishermen on the Corporation's boat, the Yukon **Star**. This vessel is involved in the Yukon River salmon fishery during the **summer** season and was active in **bottomfishing in** the Aleutians area in September **1988**.

**TABLE 13**

1988 EMPLOYMENT  
**ALAKANUK NATIVE CORPORATION**

| <u>Corporation</u>                 | <u>Location</u> | 1988 Employment       |                         |                                  |                 | <b>Total</b>     |
|------------------------------------|-----------------|-----------------------|-------------------------|----------------------------------|-----------------|------------------|
|                                    |                 | <b>Alaska</b><br>Male | <b>Native</b><br>Female | <b>Non-Native</b><br><b>Male</b> | <b>Female</b>   |                  |
| <b>Alakanuk</b> Native Corporation | <b>Alakanuk</b> | 2                     | <b>1</b>                | <b>1</b>                         | 0               | 4                |
| Alakanuk Native Store              |                 | 2                     | <b>4</b>                | 0                                | 0               | 6                |
| <b>Yupik</b> Star Fisheries        |                 | 6                     | 0                       | 0                                | <b>0</b>        | 6                |
| <b><u>TOTAL</u></b>                |                 | <b><u>10</u></b>      | <b><u>5</u></b>         | <b><u>1</u></b>                  | <b><u>0</u></b> | <b><u>16</u></b> |

Source: **Alakanuk** Native Corporation.

## VI. BRISTOL BAY REGION

For the Bristol Bay region, the Bristol Bay **Native** Corporation, the Bristol Bay **Native** Association and two **village** corporations, **Choggiung Ltd. and Togiak Natives, Ltd.**, were **examined in terms of the level and** composition of employment.

**Although** the regional corporation **was heavily involved in the** Bristol Bay region in the past (**e.g. it** previously **owned** Peter **Pan** Seafoods), **this is no longer** the case. Furthermore, **unlike** the **Arctic Slope Regional Corporation or NANA**, the Bristol Bay Regional Corporation currently **has a** relatively **simple** corporate structure. **On** the other hand, it **does not have** the **severe** financial problems facing Bering Straits **or Calista or**, to a lesser extent, the **Aleut** Corporation.

The **Bristol Bay Native Association** delivers a number of education, social and economic programs, as **well** as being responsible for **the Village Public Safety Officer** program. However, it is not responsible for the delivery of **health care** services.

**Choggiung Ltd.** is somewhat unusual in that it is a village corporation representing four villages (**Dillingham, Ekuk, New Stuyahok and Portage Creek**), **while Togiak Natives, Ltd.** represents the interests of a single **village**.

## A. BRISTOL BAY NATIVE CORPORATION

The **Bristol** Bay Native Corporation **is** headquartered in Anchorage. It does not maintain an office in the Bristol Bay area. According to its most recent **annual** report (1987), the Bristol Bay Native Corporation has approximately **5,300** shareholders, approximately **60** percent of whom **live** within the Bristol Bay region. The Corporation is entitled to receive approximately **3 million acres** of subsurface estate within the region. There are **29** Native village corporations located within the Bristol Bay Native Corporation region.

The Bristol Bay Native Corporation currently has **little** direct involvement in economic activities in the Bristol Bay region. The company's largest **single** investment, the Anchorage **Hilton** hotel, is operated through a **wholly** owned subsidiary the Bristol Bay Corporation. Another **wholly** owned subsidiary, Pacific Food Products, Inc., oversees the operations of **Tyrrell's, Inc.**, a pet food manufacturer located in **Seattle**. Through yet another wholly owned subsidiary, Bristol Resources, **Inc.**, the Bristol Bay Native Corporation is involved in Alaska United Drilling, **Inc.**, a joint venture with Veto, **Inc.**, NANA Development Corporation and **Sealaska, Inc.**, to provide drilling and well servicing operations on the North Slope.

An analysis of the composition of employment indicates a relatively even distribution between males and females and between Natives and non-Natives for the parent corporation. No breakdown of employment by race or sex was



provided by the Anchorage Hilton although the hotel does employ a number of Alaska Natives. Finally, Tyrell's primarily employs non-Native males.

TABLE 14

1988 EMPLOYMENT  
BRISTOL BAY NATIVE CORPORATION

| Corporation   | Location  | 1988 Employment    |                      |                 |                   | Total      |
|---------------|-----------|--------------------|----------------------|-----------------|-------------------|------------|
|               |           | Alaska Native Male | Alaska Native Female | Non-Native Male | Non-Native Female |            |
| BBNC          | Anchorage | 3                  | 5                    | 5               | 4                 | 17         |
| Bristol Corp. | Anchorage |                    |                      |                 |                   | 350*       |
| Tyrells, Inc. | Seattle   | 1                  | 0                    | 35              | 9                 | 45         |
| <u>TOTAL</u>  |           | <u>4</u>           | <u>5</u>             | <u>40</u>       | <u>13</u>         | <u>412</u> |

\* Average employment figure for the Anchorage Hilton.

Sources: Bristol Bay Native Corporation.  
Anchorage Hilton.  
Tyrells, Inc.

B. BRISTOL BAY NATIVE ASSOCIATION

The Bristol Bay Native Association is an Alaska Native regional non-profit corporation which is headquartered in Dillingham. It was incorporated in 1973 to provide programs of a social, educational, economic, artistic and scientific nature. Its board of directors consists of representatives from the Traditional Councils of the 30 villages of the region.

The goal of the Bristol Bay Native Association is "to promote the social and economic wellbeing of the people of the region by ensuring that

TABLE 15

1988 EMPLOYMENT  
BRISTOL BAY NATIVE ASSOCIATION

| Corporation | Location             | 1988 Employment       |                  |                    |                 | Total            |
|-------------|----------------------|-----------------------|------------------|--------------------|-----------------|------------------|
|             |                      | Alaska Native<br>Male | Female           | Non-Native<br>Male | Female          |                  |
| BBNA        | <b>Dillingham</b>    | 4                     | <b>15</b>        | <b>3</b>           | 2               | <b>24</b>        |
|             | <b>Aleknagik</b>     | <b>1</b>              | 0                | 0                  | 0               | <b>1</b>         |
|             | <b>Chignik Bay</b>   | <b>0</b>              | 0                | 1                  | <b>0</b>        | <b>1</b>         |
|             | <b>Chignik Lake</b>  | <b>1</b>              | 0                | 0                  | <b>0</b>        | <b>1</b>         |
|             | <b>Clark's Point</b> | <b>0</b>              | 0                | <b>1</b>           | <b>0</b>        | <b>1</b>         |
|             | <b>Egegik</b>        | 0                     | 0                | 1                  | <b>0</b>        | <b>1</b>         |
|             | <b>Ekwok</b>         | <b>2</b>              | <b>1</b>         | <b>1</b>           | <b>0</b>        | <b>4</b>         |
|             | <b>Kokhanok</b>      | 0                     | 2                | <b>0</b>           | <b>0</b>        | <b>2</b>         |
|             | <b>Koliganek</b>     | <b>1</b>              | <b>2</b>         | <b>0</b>           | <b>0</b>        | <b>3</b>         |
|             | <b>Levelock</b>      | <b>1</b>              | <b>2</b>         | <b>0</b>           | <b>0</b>        | <b>3</b>         |
|             | <b>Manokotak</b>     | <b>2</b>              | <b>1</b>         | <b>0</b>           | <b>0</b>        | <b>3</b>         |
|             | Naknek               | <b>0</b>              | <b>3</b>         | <b>0</b>           | <b>0</b>        | <b>3</b>         |
|             | <b>Newhalen</b>      | <b>1</b>              | <b>1</b>         | <b>0</b>           | <b>0</b>        | <b>2</b>         |
|             | New <b>Stuyahok</b>  | <b>2</b>              | <b>1</b>         | <b>0</b>           | <b>0</b>        | <b>3</b>         |
|             | <b>Nondalton</b>     | <b>1</b>              | <b>2</b>         | <b>1</b>           | <b>0</b>        | <b>4</b>         |
|             | Pedro Bay            | <b>0</b>              | <b>1</b>         | <b>0</b>           | <b>0</b>        | <b>1</b>         |
|             | Port <b>Heiden</b>   | <b>0</b>              | <b>0</b>         | <b>1</b>           | <b>0</b>        | <b>1</b>         |
|             | <b>South Naknek</b>  | <b>0</b>              | <b>3</b>         | <b>0</b>           | <b>0</b>        | <b>3</b>         |
|             | Togi ak              | <b>3</b>              | <b>3</b>         | <b>0</b>           | <b>0</b>        | <b>6</b>         |
|             | Twi n <b>Hills</b>   | <b>1</b>              | <b>2</b>         | <b>0</b>           | <b>0</b>        | <b>3</b>         |
|             | <u><b>TOTAL</b></u>  | <u><b>20</b></u>      | <u><b>39</b></u> | <u><b>9</b></u>    | <u><b>2</b></u> | <u><b>70</b></u> |

Source: Bristol Bay Native Association.

available resources reach its residents and that programs are developed that will meet their needs." To this end, the Association currently administers the following programs: Elderly Services; Human Services (Indian Child Welfare Program, Respite Care Program, Social Services, Family Violence Program); Infant Learning Program; Community Services Block Grant; Tribal Operations; Realty; Employment and Training; Summer Youth Employment Training Program; Higher Education; Economic Development; Village Public Safety Officer Program; Fisheries; and Adult Basic

Education. **It is** not responsible **for health** care services which are provided through the Bristol **Bay Area Health** Corporation.

A review **of 1988** employment **figures** provided **by** the **Bristol Bay Native** Association indicates **that close to 85 percent** were **Alaska** Native. **Females** outnumbered **males**, particularly **at the Dillingham** headquarters. **All employees of the** Bristol Bay Native **Association** are. **based within the Bristol Bay** region.

#### C. **CHOGGIUNG LTD.**

**Choggiung** Ltd. is a village corporation whose shareholders **include not only Dillingham but also** the **villages of Ekuk, New Stuyahok and Portage Creek** as the **four** communities merged **their** interests to form **a single** corporation. According **to** the corporation president, **Choggiung** currently has **1,031** shareholders, **of** whom approximately 600 live in **Dillingham**. **Of** those **living** outside the four **member** communities, the greatest number (**150 to 200**) **live in** Anchorage.

**Choggiung** Ltd. employs **9** persons **in** its central office in **Dillingham**, **all** but one of whom are female. The company also has four subsidiaries, **Quvaq (a hotel** with a restaurant and bar), **Dillingham** Cablevision (a cable TV company), **Nuna (a heavy equipment** company) and **Choggiung** General Contractors (a construction company). Total employment by the parent company, **Dillingham Cablevis**ion and **Nuna** is relatively stable. However, employment in the hotel/restaurant/bar is highly seasonal. For example,

employment in the restaurant alone varies between **13 and** 30 people. Similarly, employment **by Choggiung** General Contractors varies depending on the company's success in obtaining contracts. **At** the present time, the company is working on a major construction contract and employs close to 25 persons.

According to the corporation president, approximately **40** percent of current **Choggiung** (and subsidiaries) employees are **Alaska** Native. However, the same source estimated that when non-Natives married to Alaska Natives are included, the proportion of employees bringing monies to Native homes is closer to **52** percent.

TABLE 16

**1988 EMPLOYMENT  
CHOGGIUNG LTD.**

| <u>Corporation/Subsidiary</u> | <u>Location</u> | <u>1988 Employment</u> |               |                   |               | <u>Total</u> |
|-------------------------------|-----------------|------------------------|---------------|-------------------|---------------|--------------|
|                               |                 | <u>Alaska Native</u>   |               | <u>Non-Native</u> |               |              |
|                               |                 | <u>Male</u>            | <u>Female</u> | <u>Male</u>       | <u>Female</u> |              |
| Choggiung, Ltd.               |                 |                        |               |                   |               | 9            |
| Quvaq                         |                 |                        |               |                   |               | 20*          |
| Dillingham Cablevision        |                 |                        |               |                   |               | 2            |
| Choggiung General Contractors |                 |                        |               |                   |               | 25**         |
| Nuna                          |                 |                        |               |                   |               | 2            |
| <u>TOTAL</u>                  |                 |                        |               |                   |               | <u>58</u>    |

\* Estimated annual average employment.  
\*\* Employment as of September 1988.

Source: Choggiung, Ltd.

**D. TOGIAK NATIVES, LTD.**

Togiak Natives, Ltd. was incorporated under terms of the Alaska Native Claims Settlement Act of 1971. The Corporation is headquartered in Togiak. According to its manager, the Corporation has approximately 425 shareholders, of whom close to 95 percent live in Togiak.

Togiak Natives, Ltd. directly employs 2 persons (including the manager who is hired on a contractual basis). In addition, its wholly owned subsidiary, Our Store, Inc., employs an annual average of 12 full-time persons and another 6 persons on a half-time basis. All of these employees are based in Togiak. Except for the manager, all Corporation employees are shareholders and almost all are females.

**TABLE 17**

**1988 EMPLOYMENT  
TOGIAK NATIVES, LTD.**

| <u>Corporation/Subsidiary</u> | <u>Location</u> | <u>1988 Employment</u>    |                             |                        |                          | <u>Total</u> |
|-------------------------------|-----------------|---------------------------|-----------------------------|------------------------|--------------------------|--------------|
|                               |                 | <u>Alaska Native Male</u> | <u>Alaska Native Female</u> | <u>Non-Native Male</u> | <u>Non-Native Female</u> |              |
| Togiak Natives, Ltd.          | Togiak          | 0                         | 1                           | 1*                     | 0                        | 2            |
| Our Store, Inc.               | Togiak          | 2                         | 13                          | 0                      | 0                        | 15**         |
| <u>TOTAL</u>                  |                 | <u>2</u>                  | <u>14</u>                   | <u>1</u>               | <u>0</u>                 | <u>17</u>    |

\* Corporation manager is a non-Native male hired on contract.

\*\* Figures include an annual average of 12 full-time persons employed by Our Store, Inc., plus 6 Alaska Native females who are employed on a part-time (approximately half-time) basis.

Source: Togiak Natives, Ltd.

Our Store, Inc. is a corporation which provides a wide range of general merchandise, plus lumber, stove oil, gasoline and other petroleum products. It is also the local agent for Suzuki products and Arctic **Cat** snowmachines. According to the Corporation's manager, Our Store, **Inc.** currently realizes close to \$2 million in gross sales revenue per year and has an annual payroll of about \$150,000.

In addition to direct employment, **Togiak Natives, Ltd. also has** investments in other activities. Most notably, the Corporation is a part-owner of United Utilities, a company which provides telephone service not only to **Togiak** and nearby Twin Hills but also to a large number of other small communities, most of them located in Southwest and Interior Alaska.

## VII. ALEUTIANS REGION

In the Aleutians region, the employment characteristics of the Aleut Corporation, the Aleutian-Pribilof Island Association, and three village Corporations the Ounalashka Corporation, the Chaluka Corporation and the Tanadgusix Corporation, were examined.

While the Aleut Corporation had significant involvement in businesses located within its region in the past, this is not currently the case except for land exchange and mineral exploration projects. Like the Bristol Bay Native Corporation and the Calista Corporation, the Aleut Corporation does not maintain offices within its own region. Furthermore, of the six regional corporations examined as part of this project., only Bering Straits had fewer employees. However, the Aleut Corporation does not share the severe financial difficulties currently faced by Bering Straits.

The Aleutian-Pribilof Island Association is headquartered in Anchorage. While it is the only regional non-profit examined which is based outside its region, such arrangements are not unusual for organizations serving the Aleutians.

The three village corporations examined in this region, Ounalashka, Chaluka and Tanadgusix, are all locally based organizations, although Tanadgusix (St. Paul) also maintains an Anchorage office.

**A. ALEUT CORPORATION**

The Aleut Corporation was incorporated on June 20, 1972 as one of the twelve original regional corporations established under terms of the Alaska Native Claims Settlement Act of 1971. It is headquartered in Anchorage and maintains no office within the Aleutian region itself. According to its most recent annual report (1987), the Aleut Corporation has over 3,200 shareholders, approximately one-third of whom live within the region, with another one-third living elsewhere in Alaska and the remaining one-third living outside the State. There are 13 Native village corporations located within the Aleut Corporation region.

**TABLE 18**

**1988 EMPLOYMENT  
ALEUT CORPORATION**

| <u>Corporation/Subsidiary</u> | <u>Location</u> | <u>1988 Employment</u> |                      |                        |                          | <u>Total</u> |
|-------------------------------|-----------------|------------------------|----------------------|------------------------|--------------------------|--------------|
|                               |                 | <u>Alaska Male</u>     | <u>Native Female</u> | <u>Non-Native Male</u> | <u>Non-Native Female</u> |              |
| Aleut Corporation             | Anchorage       | 2                      | 2                    | 3                      | 4                        | 11           |
| Aleut Corporation             | San Diego       | 1                      | 0                    | 0                      | 0                        | 1            |
| <u>TOTAL</u>                  |                 | <u>3</u>               | <u>2</u>             | <u>3</u>               | <u>4</u>                 | <u>12</u>    |

Source: Aleut Corporation.

In earlier years, the Aleut Corporation had several subsidiaries which were involved in projects in its region, particularly in the fishing and transportation industries and in the servicing of oil and gas exploration activities. However, these subsidiaries have now either been sold or disbanded or are inactive. The Corporation is involved in a real estate



**limited** partnership in California **which** owns commercial property in Irvine, California and **has also** acquired **limited** partnership interests in oil and gas **wells**. In addition, the Corporation owns **an** apartment complex in San Diego **which** currently **employs** one person.

**Aside from real** estate holdings in Anchorage (**including the** office complex **in** which the Corporation's offices are **located**) the **Matanuska Valley and** California, the **Aleut** Corporation **is** presently **actively pursuing** several land-related projects. The Corporation is a member of **the** Native Lands **Group** (a limited partnership **which also** includes **Cook Inlet Region, Inc.** and **11 villages in Southcentral (3)** and **Southwest (8)** Alaska, **which** proposes to exchange **Native** corporation **lands within** national wildlife **refuges** for lands **on the coastal plain of the** Arctic National **Wildlife** Refuge. The **Aleut Corporation is also** pursuing similar **land** exchanges for **Arctic National Wildlife Refuge** acreage **on an** independent **basis**. **Within its** region, the **Aleut** Corporation is actively promoting mineral exploration of its **lands**. For example, the Battle Mountain Gold Company is currently undertaking a reconnaissance of the South Alaska **Peninsula/Shumagin Islands area**.

**The Aleut** Corporation **will** shortly receive an infusion **of** capital as a **result** of passage of the **Aleut** Reparations bill **by** the **U.S.** Congress. That legislation authorizes the appropriation of approximately **\$15** million to the Corporation for the loss **of** Attu Island. The Corporation presently **plans** to retire its debt **with** these funds and **to** place much **of** the remainder into a permanent fund.

A review of **1988** employment with the **Aleut** Corporation indicates **that** the company presently has few employees, that none are based within the Aleutian region and that the number of non-Native employees slightly outnumbers that of **Alaska** Natives.

#### **B. ALEUTIAN-PRIBILOF ISLAND ASSOCIATION, INC.**

The **Aleutian-Pribilof Island** Association (**APIA**) is based **in** Anchorage. It is the **only** regional Native non-profit organization studied which **is** headquartered outside its own region. However, such arrangements are typical of the Aleutians region because of high transportation costs and the **lack** of a **single** dominant community.

Similar to the other regional non-profit corporations, **APIA** provides a mix of health, community service (Village **Public** Safety Officer) and education programs to its region, with **field** staff based in nine communities aside from Anchorage. Another regional non-profit organization, the Aleutian Housing Authority, operates **independently of APIA**.

A review of APIA employment characteristics indicates a high proportion of females (73 percent). In addition, a relatively high proportion of employees (39 percent) are non-Native, with non-Natives outnumbering Alaska Natives at the Aleutian-Pribilof Island Association's Anchorage headquarters.

TABLE 19

1988 EMPLOYMENT  
ALEUTIAN-PRIBILOF ISLAND ASSOCIATION, INC.

| <u>Corporati on/Subsi di ary</u> | <u>Location</u> | <u>1988 Employment</u> |               |                    |               | <u>Total</u> |
|----------------------------------|-----------------|------------------------|---------------|--------------------|---------------|--------------|
|                                  |                 | <u>Alaska Native</u>   |               | <u>Non-Nati ve</u> |               |              |
|                                  |                 | <u>Male</u>            | <u>Female</u> | <u>Male</u>        | <u>Female</u> |              |
| APIA                             | Anchorage       | 1                      | 7             | 3                  | 8             | 19           |
|                                  | Akutan          | 1                      | 1             | 0                  | 0             | 2            |
|                                  | Atka            | 2                      | 3             | 0                  | 0             | 5            |
|                                  | False Pass      | 0                      | 3             | 1                  | 0             | 4            |
|                                  | King Cove       | 0                      | 2             | 1                  | 0             | 3            |
|                                  | Nikolski        | 0                      | 2             | 0                  | 0             | 2            |
|                                  | St. George      | 0                      | 0             | 1                  | 0             | 1            |
|                                  | St. Paul        | 1                      | 4             | 1                  | 0             | 6            |
|                                  | Sand Point      | 0                      | 2             | 0                  | 1             | 3            |
|                                  | Unalaska        | 0                      | 1             | 1                  | 2             | 4            |
| <u>TOTAL</u>                     |                 | <u>5</u>               | <u>25</u>     | <u>8</u>           | <u>11</u>     | <u>49</u>    |

Source: Aleutian-Pribilof Island Association.

C. CHALUKA CORPORATION

The Chaluka Corporation is the ANCSA village corporation for Nikolski, one of the smallest (about 70 shareholders) village corporations in the Aleut region. The activities of the Chaluka Corporation are modest and currently employ 2 persons, both of them male Alaska Natives, on less than a full-time basis.

The only business in which the corporation is currently involved is the sheep ranch on the island which it purchased from its former owner. The Corporation hires additional people seasonally, mainly in the spring to work on the ranch in shearing and related activities.

D. OUNALASHKA CORPORATION

The **Ounalashka** Corporation is headquartered in **Unalaska**. According to its president, the Corporation has a total of 269 shareholders, of whom **170** live in the immediate **Unalaska/Dutch** Harbor area.

The **Ounalashka** Corporation currently employs a total of **14** persons on a permanent basis, all of them located in **Unalaska**. Ten of the **14** full-time employees are Alaska Native, while the number of males and female employees are evenly divided. An additional **2 to 10** persons are temporarily employed locally on a seasonal basis in the Corporation's real estate operations. According to the Corporation president, seasonal employees vary from year to year in terms of their ethnic and gender affiliations.

TABLE 20

**1988 EMPLOYMENT  
OUNALASHKA CORPORATION**

| <u>Corporation/Subsidiary</u> | <u>Location</u> | <u>1988 Employment</u>    |                 |                        |                 | <u>Total</u>     |
|-------------------------------|-----------------|---------------------------|-----------------|------------------------|-----------------|------------------|
|                               |                 | <u>Alaska Native Male</u> | <u>Female</u>   | <u>Non-Native Male</u> | <u>Female</u>   |                  |
| <b>Ounalashka Corporation</b> | <b>Unalaska</b> | <b>4</b>                  | <b>6</b>        | <b>3</b>               | <b>1</b>        | <b>14</b>        |
| <b><u>TOTAL</u></b>           |                 | <b><u>4</u></b>           | <b><u>6</u></b> | <b><u>3</u></b>        | <b><u>1</u></b> | <b><u>14</u></b> |

Source: **Ounalashka** Corporation.

The **Ounalashka** Corporation describes itself as a real estate and development company, with its main emphasis being the long term leasing of land in **Unalaska**. The Corporation has two subsidiaries described by the President

as "paper" companies, the Dutch Harbor Development Company and the Aleutian Development Company, which hold land in the Unalaska/Dutch Harbor and Anchorage areas respectively. Neither of these companies has any employees.

#### E. TANADGUSIX CORPORATION

The Tanadgusix Corporation is headquartered in St. Paul and also maintains a small office in Anchorage. The 1985 annual report of the Aleut Corporation lists a total of 542 shareholders for the Tanadgusix Corporation. According to Corporation officers, almost all of its shareholders live on St. Paul Island.

The Tanadgusix Corporation has a permanent staff of 10 persons, 7 based in St. Paul and the remaining 3 in Anchorage. In addition, the Corporation employs another 14 people seasonally (between the end of May and the end of August.) in its hotel and restaurant operations on St. Paul Island.

A review of corporate employment by race and sex indicates that almost all employees in 1988 (23 out-of 24) were Alaska Native. The total number of Native females employed was almost double that of males. However, the difference was in seasonal hotel and restaurant employment, with the number of permanently employed Native males slightly exceeding that of Native females.

TABLE 21

1988 EMPLOYMENT  
**TANADGUSIX CORPORATION**

| <u>Corporation/Subsidiary</u>           | <u>Location</u> | <u>1988 Employment</u> |                     |                    |                 | Total            |
|---|-----------------|------------------------|---------------------|--------------------|-----------------|------------------|
|   |                 | Alaska<br>Male         | Native<br>Female    | Non-Native<br>Male | Female          |                  |
| Tanadgusix Corporation                  | St. Paul        | 5                      | 2                   | 0                  | 0               | 7                |
| Tanadgusix Corporation                  | Anchorage       | 0                      | 2                   | 1                  | 0               | 3                |
| <b>Tanadgusix</b> Corp. hotel           | St. Paul        | <b>1*</b>              | <b>6*</b>           | <b>0</b>           | <b>0</b>        | <b>7*</b>        |
| <b>Tanadgusix</b> Corp. -<br>restaurant | <b>St.</b> Paul |                        | <b>2*</b> <b>5*</b> | <b>0</b>           | <b>0</b>        | <b>7*</b>        |
| <b><u>TOTAL</u></b>                     |                 | <b><u>8</u></b>        | <b><u>15</u></b>    | <b><u>1</u></b>    | <b><u>0</u></b> | <b><u>24</u></b> |

\* Seasonal employees (3 months per year). An additional seasonal employee works on a relief basis for 12 hours per week.

Source: **Tanadgusix** Corporation.

As the Nation's principal conservation agency, the Department of the Interior has responsibility for most of our nationally owned public lands and natural resources. This includes fostering the wisest use of our land and water resources, protecting our fish and wildlife, preserving the environmental and cultural values of our national parks and historical places, and providing for the enjoyment of life through outdoor recreation. The Department assesses our energy and mineral resources and works to assure that their development is in the best interest of all our people. The Department also has a major responsibility for American Indian reservation communities and for people who live in Island Territories under U.S. Administration.

